



**Installation Instructions**  
**Headache Rack**  
**Product Number: HR2011**  
**Application: 2016 TOYOTA TACOMA**

.....  
**SAFETY**  
.....

**Your safety and the safety of others is very important.**

- In order to help you make informed decisions about safety, we have provided installation instructions and other information.
- These instructions alert you to potential hazards that could hurt you or others.
- Please do a job safety analysis (JSA) before each task to identify potential hazards for your situation and remove/protect against them.
- You must use your own good judgment, and take your time.

**Read and understand all safety precautions and instructions before installing this product.**

**THIS PRODUCT IS FOR OFFROAD USE ONLY. ALL LIABILITY FOR INSTALLATION AND USE RESTS WITH THE OWNER.**

**CARELESS INSTALLATION AND OPERATION CAN RESULT IN SERIOUS INJURY OR EQUIPMENT DAMAGE.**

.....  
**INJURY HAZARD**  
.....

**Failure to observe these instructions could lead to severe injury or death.**

- Always** remove jewelry and wear eye protection.
- Always** use extreme caution when jacking up a vehicle for work. Set emergency brake and use tire blocks. Locate and use the vehicle manufacturers designated lifting points. Use jack stands.
- Always** use appropriate and adequate care in lifting components into place.
- Always** insure components will remain secure during installation and operation.
- Always** wear safety glasses when installing this kit. A drilling operation will cause flying metal chips. Flying chips can cause serious eye injury.
- Always** use extreme caution when drilling on a vehicle. Thoroughly inspect the area to be drilled (on both sides of material) prior to drilling, and relocate any objects that may be damaged.
- Always** use extreme caution when cutting and trimming during fitting.
- Always** tighten all nuts and bolts securely per installation instructions.
- Always** route electrical cables carefully. Avoid moving parts, components that become hot and rough or sharp edges.
- Always** insulate and protect all exposed wiring and electrical terminals.
- Always** perform regular inspections and maintenance on mounts and related hardware.



**Installation Instructions**  
**Headache Rack**  
**Product Number: HR2011**  
**Application: 2016 TOYOTA TACOMA**

## **I. Overview**

Congratulations on your new purchase of the industries' best and most stylish Headache Rack available for the 2016 Toyota Tacoma! This rack has been **engineered.**

Your Headache Rack was designed in 3-D from digitized data, CNC laser cut, fabricated, and powder coated... all in the U.S.A.

Enjoy the fit and finish of a quality Headache Rack from Fab Fours Inc.

# Insert image

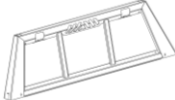






**Installation Instructions**  
**Headache Rack**  
**Product Number: HR2011**  
**Application: 2016 TOYOTA TACOMA**

## II. Tools Required

- 11/16", 7/16", 5/8" Wrenches
- 11/16", 7/16", 5/8" Sockets and Drivers
- #27 .144" Drill Bit

## III. Kit Contents

	QTY	DESCRIPTION	FAB FOURS PART NUMBER
	x 1	Headache Rack	20952
	x 1	HR2011 Driver Side Bracket	20986
	x 1	HR2011 Passenger Side Bracket	20987
	x 1	HR2011 Hardware Kit	50047
	x 1	HR2011 Instruction Manual	HR2011-IM



**Installation Instructions**  
**Headache Rack**  
**Product Number: HR2011**  
**Application: 2016 TOYOTA TACOMA**

**IV. Installation**

***A. Remove tie downs from inside of bed with a T40 torx. Install the brackets to the bed as shown below. Place the tie down over the bracket and loosely bolt in place (Fig. 1a).***



**Figure 1a**



# Installation Instructions

## Headache Rack

Product Number: HR2011  
Application: 2016 TOYOTA TACOMA

**B. With bracket installed to the bed sides, drill the holes into the top of the rail with a #27 (.144") drill bit. Install using supplied 1/4" hex head screw hardware (Ref. Figure 2a-b).**

**C. Complete Steps A and B for both sides.**

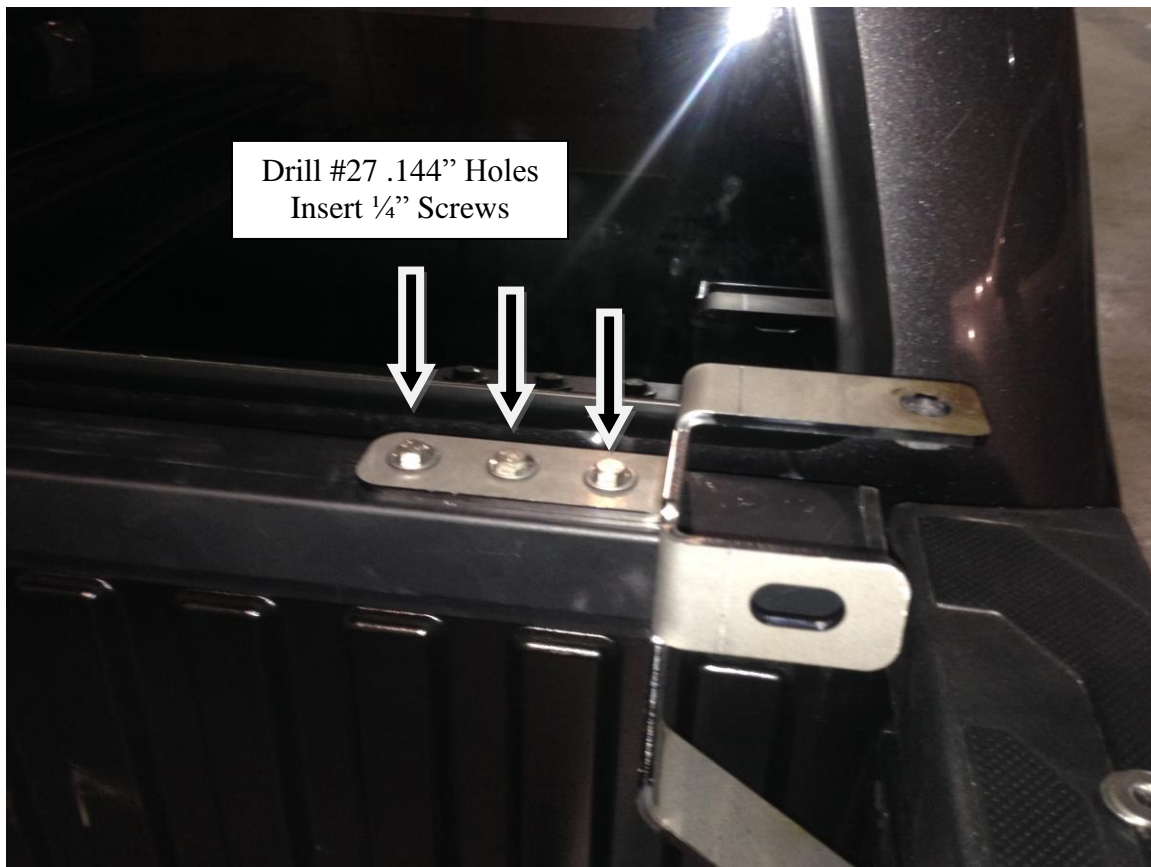


Figure 2a



**Installation Instructions**  
**Headache Rack**  
**Product Number: HR2011**  
**Application: 2016 TOYOTA TACOMA**

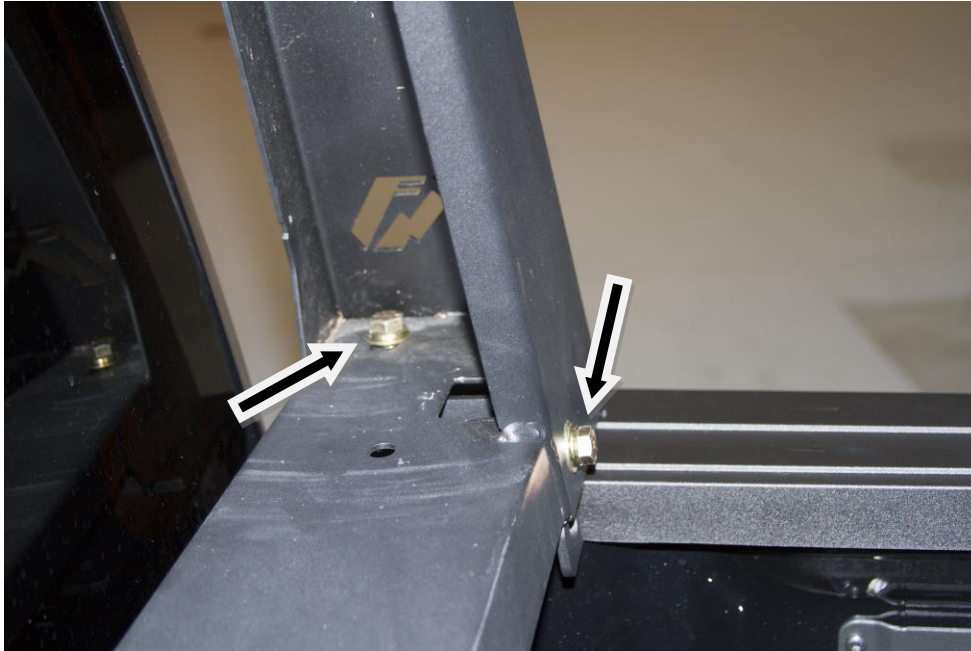


**Figure 2b**



**Installation Instructions**  
**Headache Rack**  
**Product Number: HR2011**  
**Application: 2016 TOYOTA TACOMA**

***D. Install the rack over the top of the mounts. Attach with 7/16" hardware.***





**Installation Instructions**  
**Headache Rack**  
**Product Number: HR2011**  
**Application: 2016 TOYOTA TACOMA**

**V. Maintenance/Care**

- Periodically check and tighten all nuts.
- Stripped, fractured, or bent bolts or nuts need to be replaced.

**VI. Contact Information**

Fab Fours Inc.  
1312 Camp Creek Rd.  
Lancaster, SC 29720

Phone (866)-385-1905  
Fax (866)-574-1424  
Email [Support@fabfours.com](mailto:Support@fabfours.com)



**More than expected... Better than expected.**