



Installation Instructions

Premium Rear Bumper

Product Number: W4150, W4151

Application: 2017 Ford Super Duty

SAFETY

Your safety and the safety of others is very important.

- In order to help you make informed decisions about safety, we have provided installation instructions and other information.
- These instructions alert you to potential hazards that could hurt you or others.
- Please do a job safety analysis (JSA) before each task to identify potential hazards for your situation and remove/protect against them.
- You must use your own good judgment, and take your time.

Read and understand all safety precautions and instructions before installing this product.

**THIS PRODUCT IS FOR OFFROAD USE ONLY. ALL LIABILITY FOR
INSTALLATION AND USE RESTS WITH THE OWNER.**

**CARELESS INSTALLATION AND OPERATION CAN RESULT IN SERIOUS INJURY
OR EQUIPMENT DAMAGE.**

**SENSORS FIELD OF VIEW WILL BE ALTERED WITH USE OF THE
REPLACEMENT BUMPER.**

Injury hazard

Failure to observe these instructions could lead to severe injury or death.

- Always** remove jewelry and wear eye protection.
- Always** use extreme caution when jacking up a vehicle for work. Set emergency brake and use tire blocks. Locate and use the vehicle manufacturers designated lifting points. Use jack stands.
- Always** use appropriate and adequate care in lifting components into place.
- Always** insure components will remain secure during installation and operation.
- Always** wear safety glasses when installing this kit. A drilling operation will cause flying metal chips. Flying chips can cause serious eye injury.
- Always** use extreme caution when drilling on a vehicle. Thoroughly inspect the area to be drilled (on both sides of material) prior to drilling, and relocate any objects that may be damaged.
- Always** use extreme caution when cutting and trimming during fitting.
- Always** tighten all nuts and bolts securely per installation instructions.
- Always** route electrical cables carefully. Avoid moving parts, components that become hot and rough or sharp edges.
- Always** insulate and protect all exposed wiring and electrical terminals.
- Always** perform regular inspections and maintenance on mounts and related hardware.



Installation Instructions

Premium Rear Bumper

Product Number: W4150, W4151

Application: 2017 Ford Super Duty

I. Overview

Congratulations on your purchase of the industries' best and most stylish Ford Super Duty Rear Bumper! This bumper has been **engineered** for strength while keeping the weight down.

This product has also been **engineered** to allow alignment in three directions so you will end up with a very professional fit.

Your bumper was designed in 3-D, fabricated, and powder coated... all in the U.S.A.

Enjoy the fit and finish of a quality Ford Super Duty Rear Bumper from Fab Fours Inc!





Installation Instructions

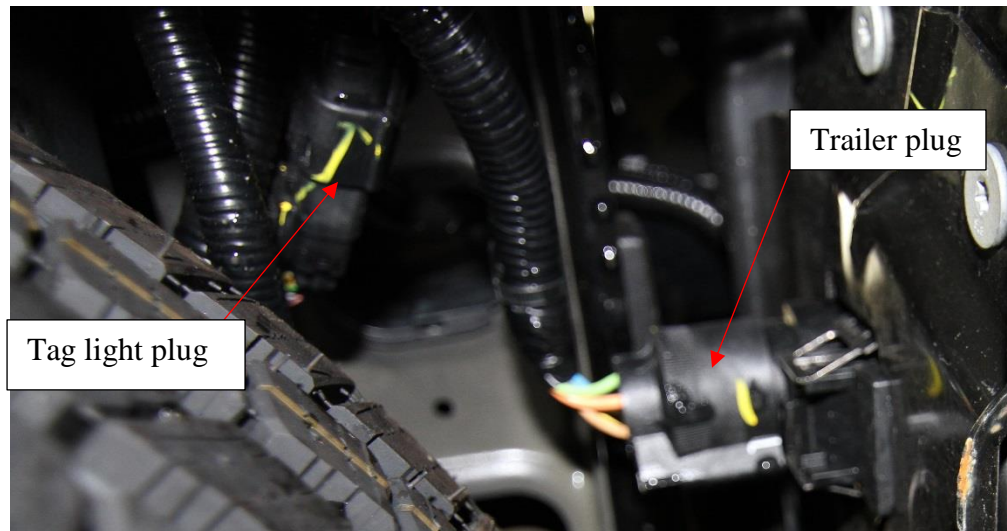
Premium Rear Bumper

Product Number: W4150, W4151

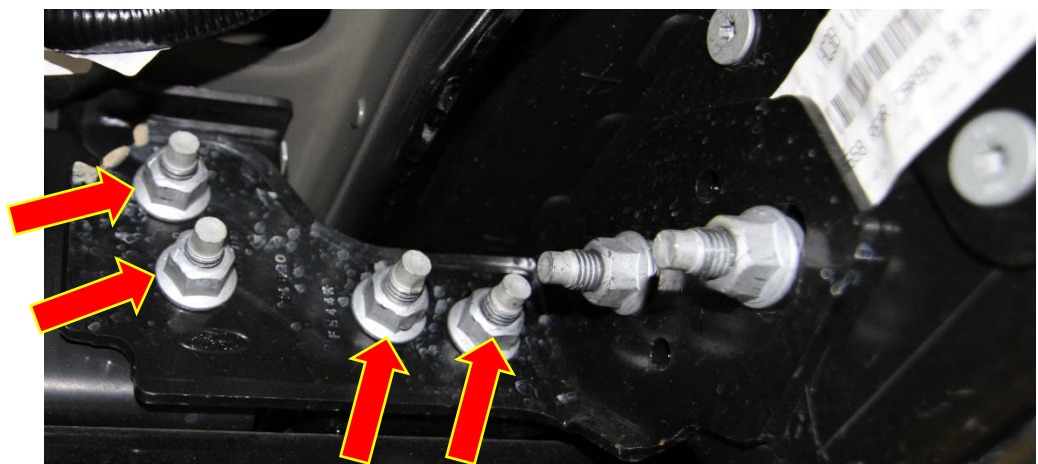
Application: 2017 Ford Super Duty

II. Vehicle Preparation

1. Start by locating the trailer plug and tag light plug shown below. Unplug both of these.



2. Next using a 13/16" deep socket remove the four nuts holding the factory rear bumper brackets to the frame on each side of vehicle. See image below.





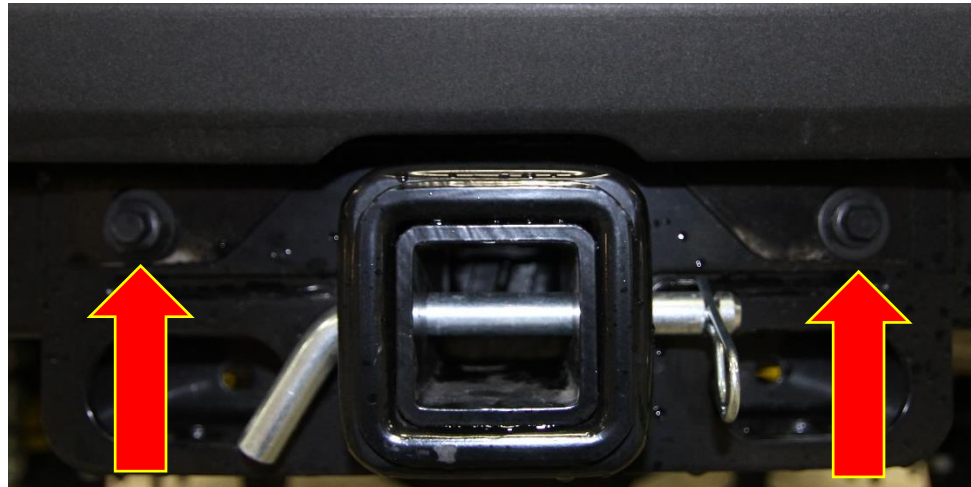
Installation Instructions

Premium Rear Bumper

Product Number: W4150, W4151

Application: 2017 Ford Super Duty

3. Next using $\frac{1}{2}$ " socket remove the two bolts located on either side of receiver tube (see image). Once these are removed rear bumper is ready to come off vehicle.



III. Sensor Installation

1. Remove sensors for rear bumper and place them in corresponding location in Fab Fours Bumper. Sensor harness routing shown.

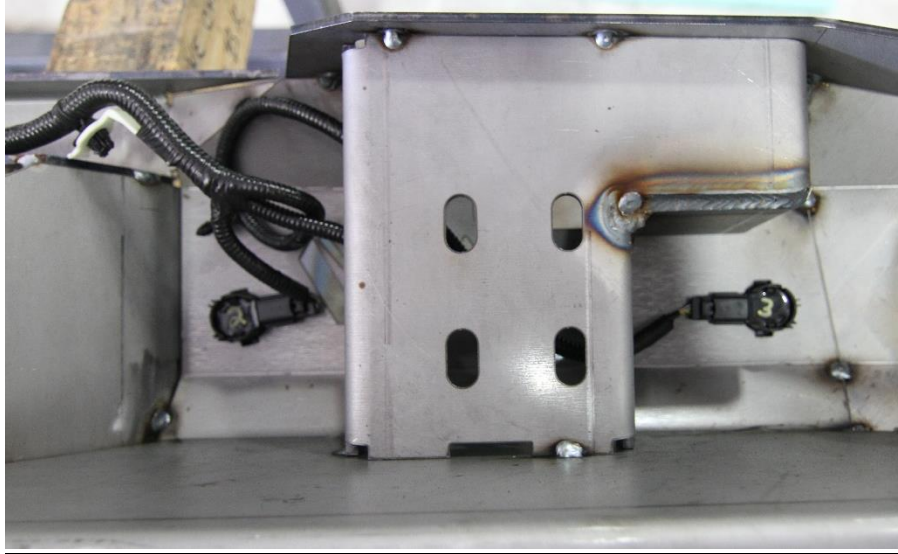


Installation Instructions

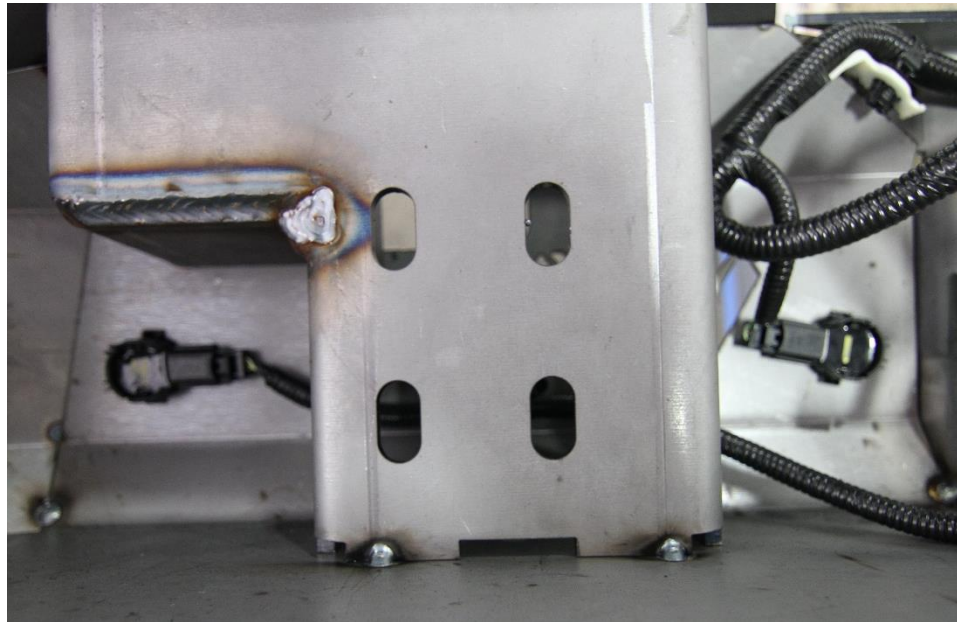
Premium Rear Bumper

Product Number: W4150, W4151

Application: 2017 Ford Super Duty



PASSENGER SIDE



DRIVER SIDE

IV. **Bumper Installation**

1. Install the black license plate lights into the bumper by first separating the black lens from the metal housing.



Installation Instructions

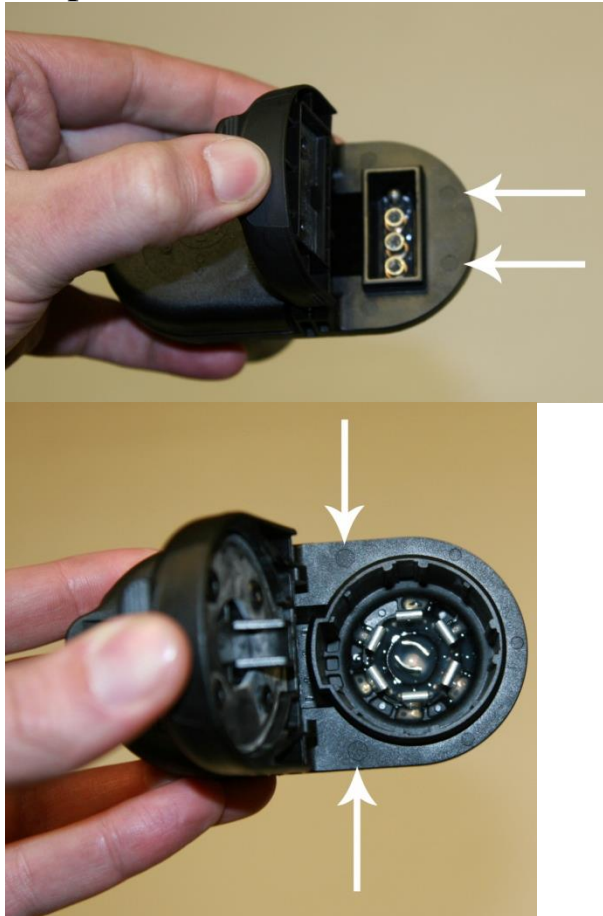
Premium Rear Bumper

Product Number: W4150, W4151

Application: 2017 Ford Super Duty

Clamp the bumper between the two halves using the supplied #8 hardware. These will be wired once the bumper is installed.

2. Drill the OEM Trailer Hitch Plug using a #16 Drill Bit (.177") in the locations pointed out with arrows below. Use care to drill directly in the center of the circles in the plastic.



3. Install the trailer plug into the cutout in the new bumper using the #8 supplied hardware.



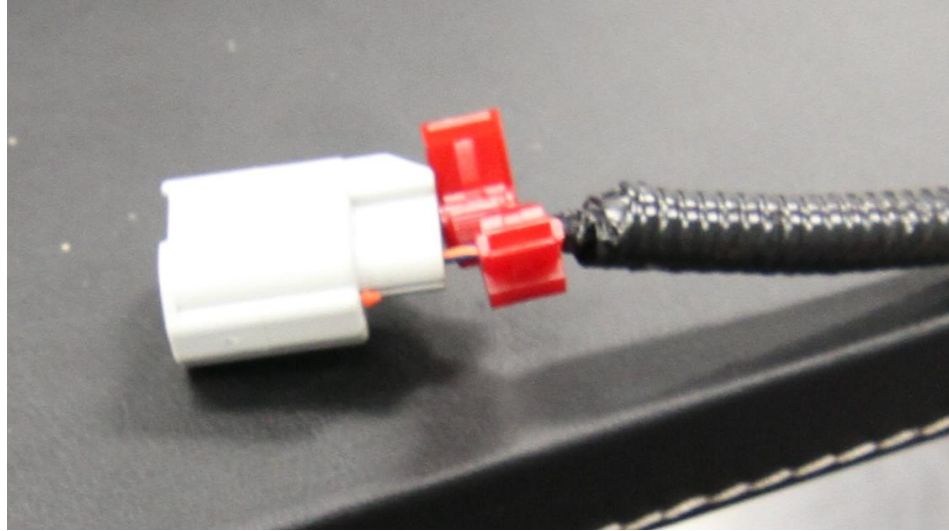
Installation Instructions

Premium Rear Bumper

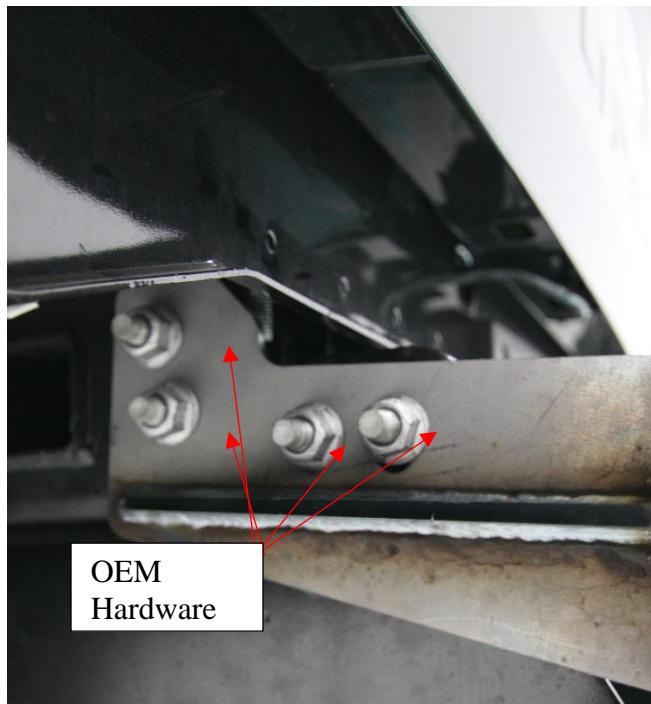
Product Number: W4150, W4151

Application: 2017 Ford Super Duty

4. Next using provided terminals splice into factory tag light wiring.



5. Next line up Fab Fours mounting bracket with OEM mounting location.





Installation Instructions

Premium Rear Bumper

Product Number: W4150, W4151

Application: 2017 Ford Super Duty

6. Next loosely install factory hardware back into bumper mount.
7. Finally position bumper into desired location and loosely install supplied ½” bolt strips.
8. With all hardware loosely installed and bumper in desired location you can now tighten all hardware. Start by tightening the OEM bumper hardware securing bracket to frame, then tighten all bracket to bumper hardware.
9. To complete installation you can now hook up tag lights and plug in the trailer plug connector.



Installation Instructions

Premium Rear Bumper

Product Number: W4150, W4151

Application: 2017 Ford Super Duty

V. Maintenance/Care

- Periodically check and tighten all fasteners.
- Stripped, fractured, or bent bolts or nuts need to be replaced.
- Keep all surfaces free of dirt, road grime, and standing water to ensure finish longevity.

VI. Contact Information

Fab Fours Inc.
2213 Industrial Park Rd.
Lancaster, SC 29720

Phone (866)-385-1905
Fax (866)-574-1424
Email Support@fabfours.com



More than expected... Better than expected